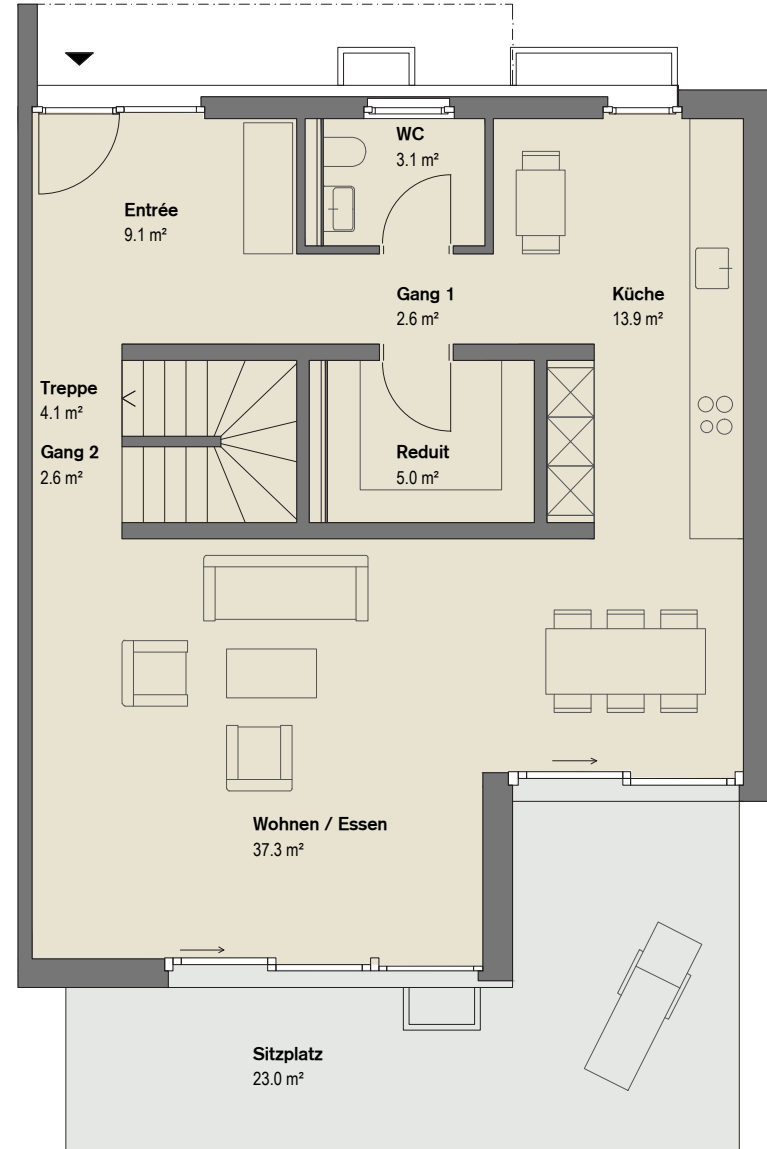
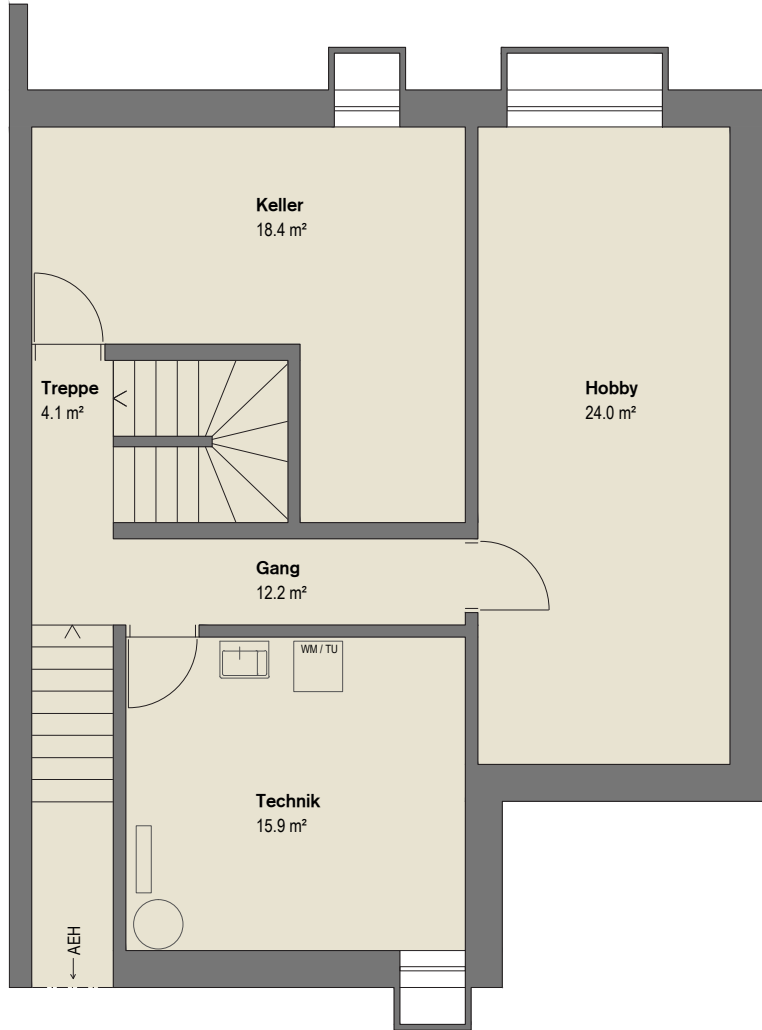
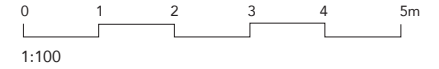
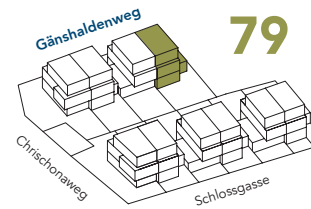
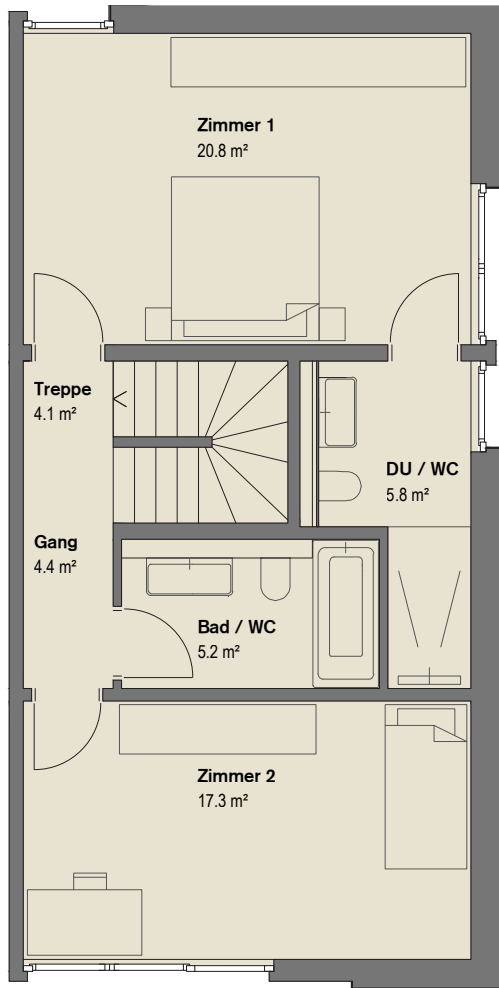
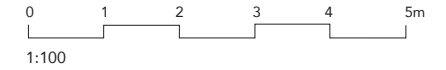
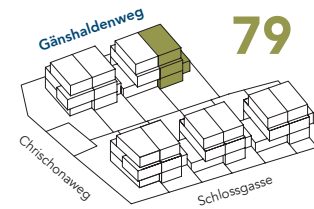


_Wohn-/Nutzfläche	214.6m ²
_Aussenfläche	39.4m ²
_Grundstücksfläche	247 m ²

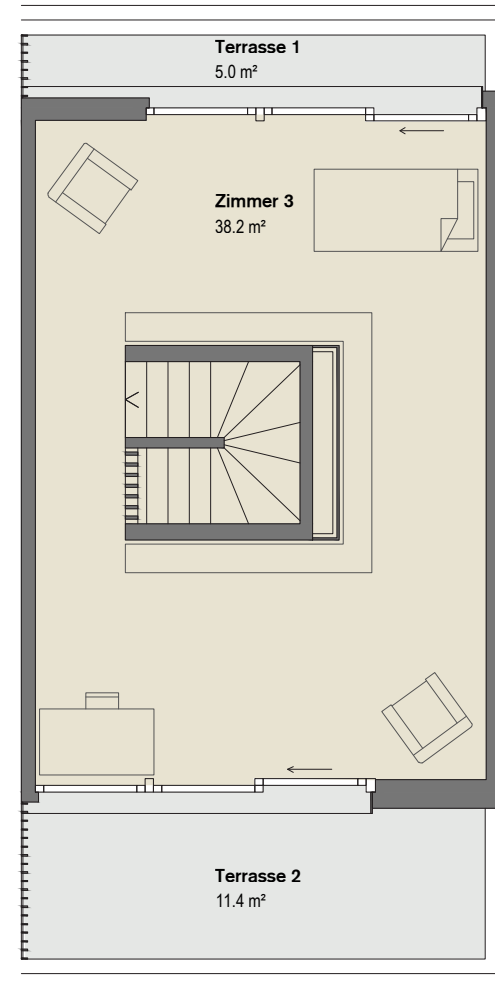


4.5-Zimmer Einfamilienhaus

_Wohn-/Nutzfläche	214.6m ²
_Aussenfläche	39.4m ²
_Grundstücksfläche	247 m ²



| 1.OG |



| DG |