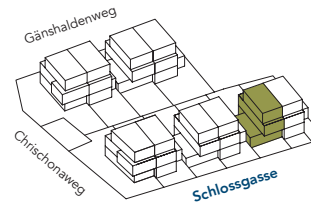
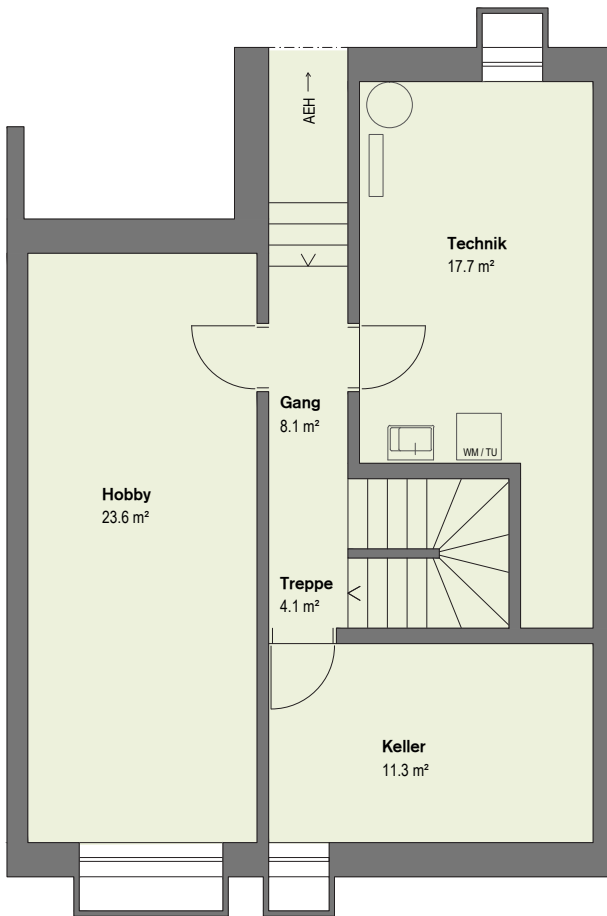
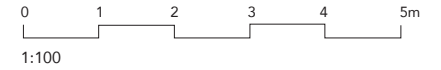


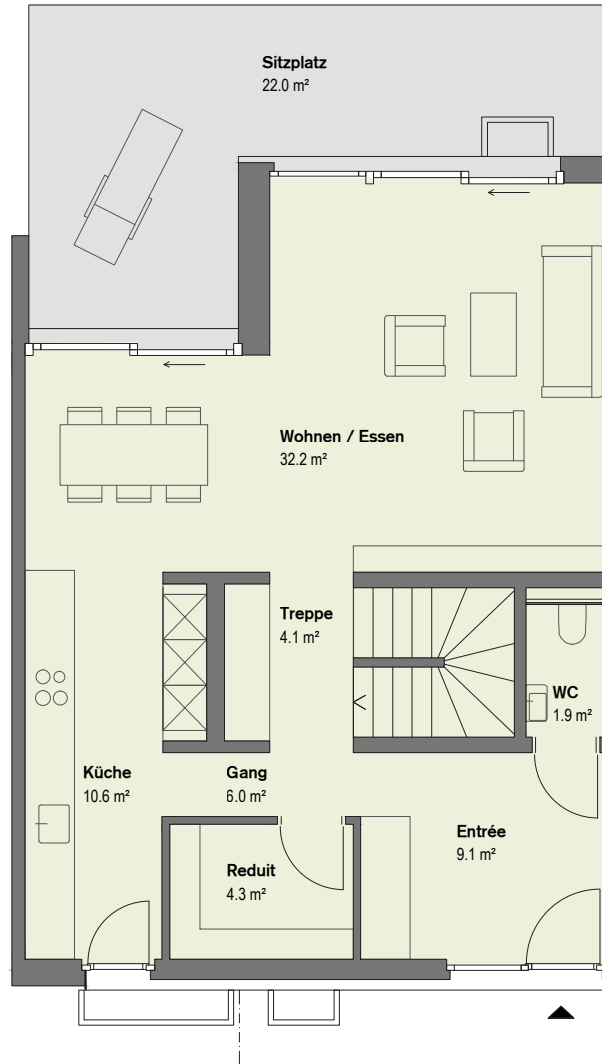
_Wohn-/Nutzfläche	179.8 m <sup>2</sup>
_Aussenfläche	35.6 m <sup>2</sup>
_Grundstücksfläche	194 m <sup>2</sup>



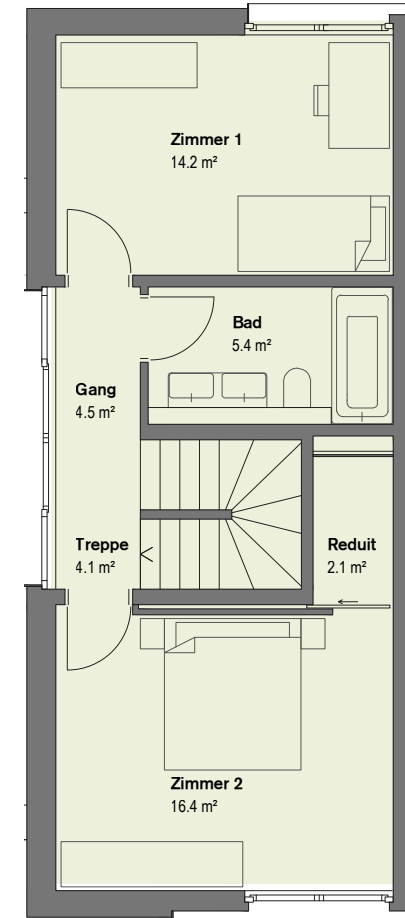
**46**



| UG |



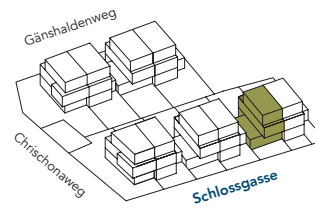
| EG |



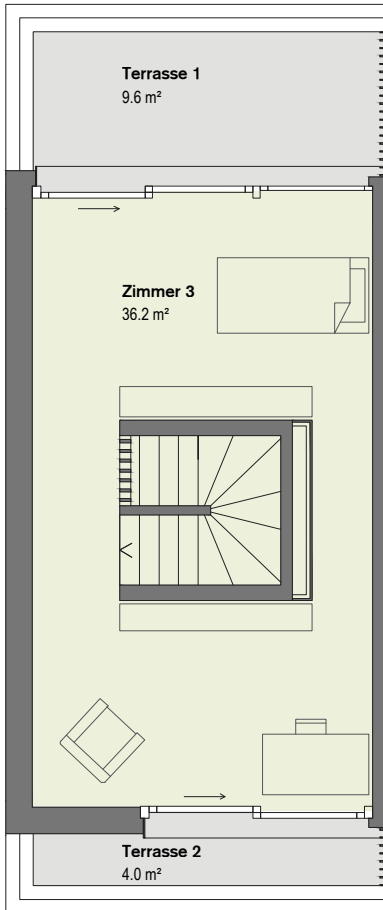
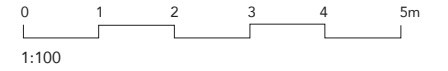
| 1.OG |

**4.5-Zimmer Einfamilienhaus**

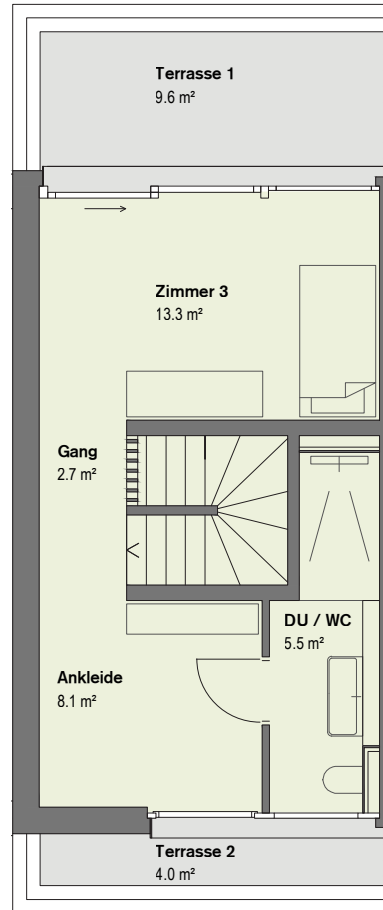
_Wohn-/Nutzfläche	179.8m <sup>2</sup>
_Aussenfläche	35.6m <sup>2</sup>
_Grundstücksfläche	194m <sup>2</sup>



**46**



| DG |



| DG Option |

Kosten für den in der Option dargestellten Ausbau, auf Anfrage.